



EMERALD
PLANET
SMART SOLUTIONS

PRODUCT CATALOGUE

**COMMERCIAL & RESIDENTIAL
LIGHTING SPECIALISTS**

November 2018



Emerald Planet is a leading Australian-owned manufacturer and distributor of smart energy-efficient solutions, with deep expertise in LED lighting.

COMPANY BACKGROUND

Since our inception in 2006, Emerald Planet has been at the forefront of the environmental market, with a vision to reduce greenhouse emissions through smart technology.

Originally operating in the NSW Greenhouse Gas Abatement Scheme (GGAS) the company has since evolved to also offer a wide range of energy-efficient solutions across residential and commercial sectors in all national carbon abatement schemes and broader energy-efficiency markets, domestic and international.

Emerald Planet's difference is our ability to design products to deliver optimum energy-efficiency, performance and reliability at affordable price points.

Our focus on research and development, our collaborative customer engagement and our market expertise are all key elements of our success.

As we continue to innovate and operate at the forefront of energy-efficient technology, we remain committed to successful customer outcomes and the formation of long-lasting, trusted relationships.

OUR MEMBERSHIPS INCLUDE:



lightingcouncil.com.au



saaaustralia.org.au



eec.org.au

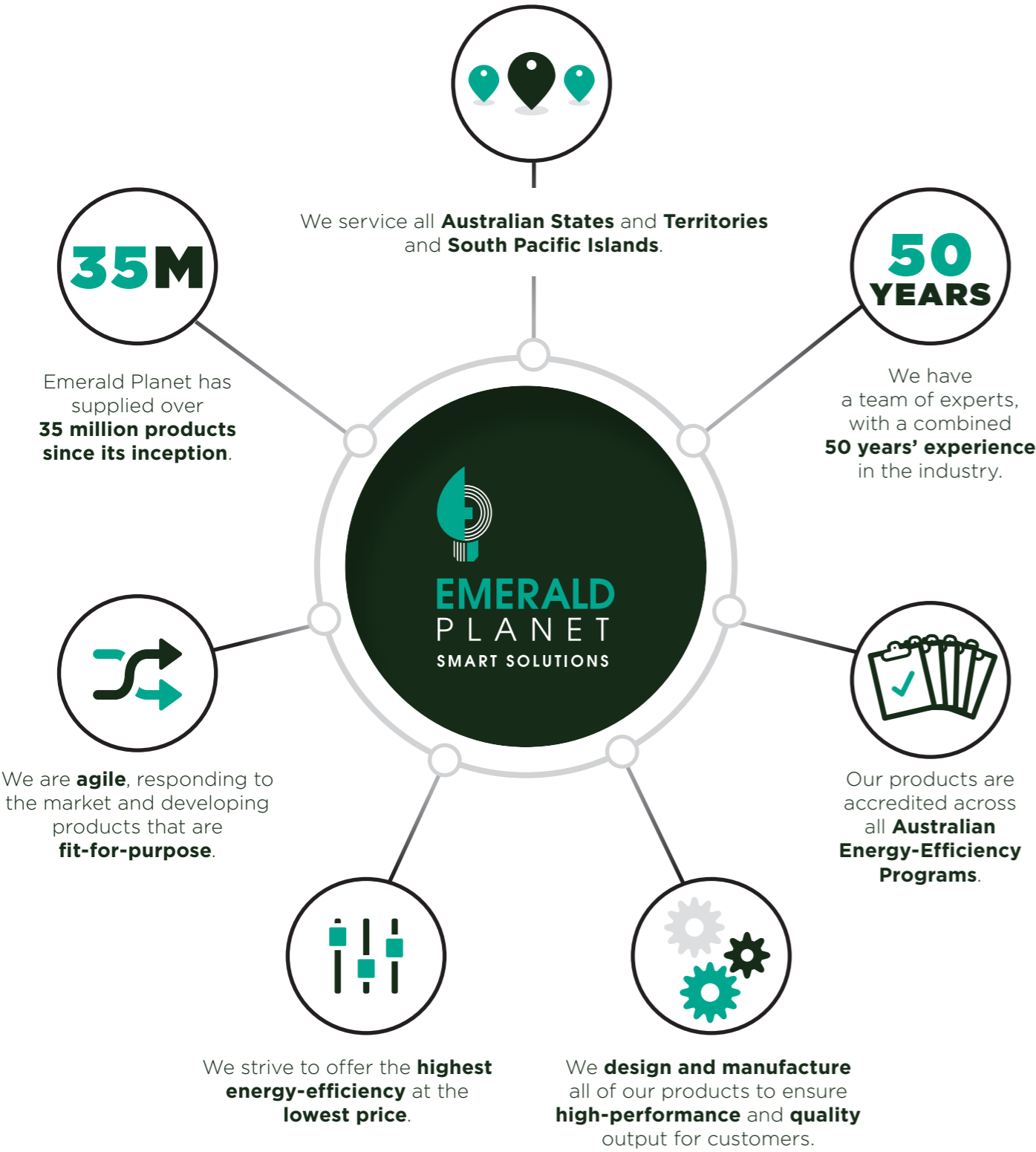


esia.asn.au



fluorocycle.org.au

IN FOCUS



OUR PROMISE



TABLE OF CONTENTS

 RESIDENTIAL SOLUTIONS

LED SPOTLIGHTS	3
ENVIRO 500	3
ZODIAC SERIES	4
LM84 SERIES	5
LED DOWNLIGHTS	6
ECLIPSE HP SERIES	7
ECLIPSE PC SERIES	8
CRYSTAL	9
LUMINAIRE SERIES	10
TRI-COLOUR SERIES	11
ANTI-GLARE SERIES	12
LED BULBS	15
TRADITIONAL SERIES	15
LM84 SERIES	16
CANDLE AND ROUND SERIES	17
PAR38 LIGHTS	18
VINTAGE SERIES	19
LED OYSTER LIGHTS	20
DIMMERS	21
STANDBY POWER CONTROLLERS	22
FAN SEAL	23

 COMMERCIAL SOLUTIONS

LED TUBES	27
T8 SERIES	27
T5 SERIES	28
LED BATTENS	29
SLIMLINE SERIES	29
NAUTICA SERIES	30
XL SERIES	31
LED PANELS	32
COMMANDER SERIES	32
EXECUTIVE SERIES	33
AMBASSADOR SERIES	34
PANEL ACCESSORIES	35
SURFACE MOUNTING FRAME	
AIR-CONDITIONING FRAME	
RECESSED MOUNTING FRAME	
LED SHOPLIGHTS	36
RECTANGULAR SERIES	36
ROUND FIXED SERIES	37
ROUND TILT SERIES	38

 INDUSTRIAL SOLUTIONS

LED HIGH BAYS	43
HIGH-Q SERIES	43
EMERALD EYE SERIES	44
HIGH BAY ACCESSORIES	45
MOTION SENSORS	
ALUMINIUM REFLECTOR	
LED FLOODLIGHTS	47
SLIMLINE SERIES	47
TORRENT SERIES	48
MODULAR SERIES	49
EMERGENCY SOLUTIONS	
EMERGENCY LIGHTING	53
XL SERIES (BATTEN)	53
FIREFLY SERIES	54
FIREBOX	55
FIREBIRD	56

 SMOKE ALARMS

240V MAINS POWER	
240V 1 YEAR BACK-UP	59
240V 10 YEAR BACK-UP	60
240V RF BASE	61
240V BASE	62
BATTERY POWERED	
RF INTERCONNECTION - 1 YEAR REPLACEABLE	63
RF INTERCONNECTION - 10 YEAR NON-REPLACEABLE	64
1 YEAR REPLACEABLE	65
10 YEAR NON-REPLACEABLE	66



RESIDENTIAL SOLUTIONS

LED SPOTLIGHTS

LED DOWNLIGHTS

LED BULBS

LED OYSTER LIGHTS

DIMMERS

**STANDBY POWER
CONTROLLERS**

FAN SEAL



ENVIRO 500
(MR16 LED SPOTLIGHT NON-DIMMABLE)

The 6W Enviro MR16 LED is the lamp of choice for replacing existing 12V halogen MR16 globes without needing to change the transformer.

Warm white and high lumen output make it the ideal replacement for 35W or 50W halogen lamps.



- FEATURES
- Traditional halogen MR16 size
 - Efficient and bright
 - Efficient heat dissipation
 - IES files available on request

CHARACTERISTICS

POWER FACTOR	>0.9	MODEL NUMBER	CCT	DIMMABLE	WATT	LCP	LUMENS	EFFICACY
CRI	>80	EP-MR16-3000	3000K	No	6W	5.7W	520	92lm/W
BEAM ANGLE	65°							
IP RATING	20							
LIFETIME (L70)	>50,000hrs							
WARRANTY	2 Years							

VEET
Approved
VIC

ESS
Approved
NSW

EEIS
Approved
ACT

REES
Approved
SA

SAA

NATA

RCM



ZODIAC SERIES

Quickly and simply replace existing halogen GU10 (240V) lamps with the Emerald Planet Zodiac GU10 LED. Available in both dimmable and non-dimmable models, our GU10 LED is a highly efficient 6W and uses 80% less energy than conventional halogen globes.

Optional GU10 connector available.
No screwdriver required.



- FEATURES
- Equivalent brightness to 35W and 50W halogens
 - Quick and easy direct swap to GU10 halogens
 - Low operating temperature, a fraction of the heat of halogens
 - IES files available on request

CHARACTERISTICS

POWER FACTOR	>0.9	MODEL NUMBER	CCT	DIMMABLE	WATT	LCP	LUMENS	EFFICACY
CRI	>80	EP-GU10-3	3000K	No	6W	6.14W	570	93lm/W
BEAM ANGLE	60°							
IP RATING	20							
LIFETIME (L70)	>50,000hrs							
WARRANTY	3 Years							

VEET
Approved
VIC

ESS
Approved
NSW

EEIS
Approved
ACT

REES
Approved
SA

SAA

NATA

RCM

RESIDENTIAL SOLUTIONS
LED SPOTLIGHTS



LM84 SERIES

Using the latest generation LED spotlight technology, the LM84 Series is the first of its kind to be approved for use in the NSW Energy Saving Scheme’s HEER residential program. Exceeding an incredible 100+ lumens per watt and at 500 lumens, it offers unprecedented energy-efficiency and brightness.

Optional GU10 connector with junction box shown. No screwdriver required.

FEATURES

- >100lm/W efficacy
- Dimmable and non-dimmable GU10 models.
- Equivalent brightness to 35W and 50W halogens
- Low operating temperature, a fraction of the heat of halogens
- IES files available on request

CHARACTERISTICS

POWER FACTOR	>0.9	GU10 BASE	CCT	DIMMABLE	WATT	LCP	LUMENS	EFFICACY
CRI	>80	EP-GU10-530	3000K	No	5W	4.73W	499	106lm/W
BEAM ANGLE	60°	EP-GU10-530D	3000K	Yes	5W	4.77W	495	105lm/W
IP RATING	20	EP-GU10-540	4000K	No	5W	4.67W	500	107lm/W
LIFETIME (L70)	>50,000hrs	EP-GU10-540D	4000K	Yes	5W	4.59W	490	109lm/W
WARRANTY	2 Years	GU5.3 BASE	CCT	DIMMABLE	WATT	LCP	LUMENS	EFFICACY
		EP-MR16-530	3000K	No	5W	4.57W	482	105lm/W
		EP-MR16-540	4000K	No	5W	4.66W	469	101lm/W

VEET
Approved
VIC

ESS
Approved
NSW

EEIS
Approved
ACT

REES
Approved
SA

SAA

NATA

RCM





ECLIPSE HP SERIES

The Eclipse HP (High Performance) is the benchmark in energy efficiency reaching 100+ lumens per watt. The HP is designed to cast the perfect amount of light for residential environments and is complemented with a recessed polycarbonate diffuser and matte white finish.

Installation recommendation:

- 5W – Standard ceiling (up to 3m)
- 8W – High ceiling (>3m)



FEATURES

- Recessed diffuser
- Lightweight, energy-efficient
- Thermally resistant polycarbonate construction
- High efficacy
- Wide dimming range
- Compatible with TRIAC dimmers
- Rated IC-4 (can be covered by insulation)
- Driver integrated into lamp body
- IES files available on request



ECLIPSE PC SERIES

The Eclipse PC is designed for residential environments and is complemented with a flush polycarbonate diffuser and matte white finish.

Installation recommendation:

- 6.5W – Standard ceiling (up to 3m)
- 9W – High ceiling (>3m)



FEATURES

- Lightweight, energy-efficient
- Thermally resistant polycarbonate construction
- High efficacy
- Wide dimming range
- Compatible with TRIAC dimmers
- Available in 70mm and 90mm cut-outs
- IES files available on request

CHARACTERISTICS

POWER FACTOR	>0.9	MODEL NUMBER	CCT	DIMMABLE	WATT	LCP	LUMENS	EFFICACY	CUT-OUT SIZE
CRI	>80	EP-PC590-3	3000K	No	5W	4.88W	523	107.7lm/W	90mm
BEAM ANGLE	90°	EP-PC590-D3	3000K	Yes	5W	4.92W	521	105.8lm/W	90mm
IP RATING	40	EP-PC590-D6	6000K	Yes	5W	4.92W	521	105.8lm/W	90mm
LIFETIME (L70)	>50,000hrs	EP-PC890-D3	3000K	Yes	8W	7.8W	840	107.7lm/W	90mm
WARRANTY	3 Years	EP-PC890-D6	6000K	Yes	8W	7.8W	840	107.7lm/W	90mm
		EP-PC570-D3	3000K	Yes	5W	4.97W	538	108lm/W	70mm
		EP-PC590-D4	4000K	Yes	5W	4.80W	526	110lm/W	90mm

CHARACTERISTICS

POWER FACTOR	>0.9	MODEL NUMBER	CCT	WATT	LCP	LUMENS	EFFICACY	CUT-OUT SIZE
CRI	>80	EP-PC70-3K	3000K	6W	6.46W ESS 6.71W VEET	587	87lm/W	70mm
BEAM ANGLE	90°	EP-PC70-3K	4000K	6.5W	6.46W ESS 6.71W VEET	587	87lm/W	90mm
DIMMABLE	Yes	EP-PC70-6K	6000K	6.5W	6.80W	590	87lm/W	90mm
IP RATING	20	EP-PC90-3K	3000K	9W	8.71W ESS 8.76W VEET	799	91lm/W	90mm
LIFETIME (L70)	>50,000hrs	EP-PC90-3K	4000K	9W	8.71W ESS 8.76W VEET	799	91lm/W	90mm
WARRANTY	3 Years	EP-PC90-6K	6000K	9W	9.21W	826	89lm/W	90mm





CRYSTAL
(70MM AND 90MM COMPATIBLE)

The Crystal Downlight from EP is an elegant, dimmable LED lamp and driver kit, with a crisp, anti-glare crystal lens. Its sharp aesthetics combine traditional halogen MR16 looks with modern LED luminaire design.



FEATURES

- Complete replacement kit
- Sharp, modern looks
- COB design
- Tilt gimbal
- Compatible with TRIAC dimmers
- IES files available on request

CHARACTERISTICS

POWER FACTOR	>0.9	MODEL NUMBER	CCT	WATT	LCP	LUMENS	EFFICACY
CRI	>80	EP-DLC-8	3000K	8W	8.6W	720	83lm/W
BEAM ANGLE	60°						
DIMMABLE	Yes						
IP RATING	20						
CUT-OUT SIZE	70mm/90mm combined						
LIFETIME (L ₇₀)	>50,000hrs						
WARRANTY	3 Years						

SAA	NATA	RCM
-----	------	-----



LUMINAIRE SERIES

EP's Downlight Luminaire Series is a modern, architecturally-designed, dimmable lamp and driver kit. Its simple flush mounted white diffuser allows it to subtly disappear into the ceiling.



FEATURES

- Complete replacement kit
- Broad beam angle with no shadowing
- Low profile, fits narrow ceiling cavities
- Compatible with TRIAC dimmers
- Available in 70mm and 90mm cut-outs
- IES files available on request

CHARACTERISTICS

POWER FACTOR	>0.9	MODEL NUMBER	CCT	WATT	LCP	LUMENS	EFFICACY	CUT-OUT SIZE
CRI	>80	EPU-DL-8508	3000K	10W	9.94W	733	74lm/W	70mm
BEAM ANGLE	90°	EPU-DL-8515	4000K	10W	9.96W	832	84lm/W	70mm
DIMMABLE	Yes	EPU-DL-8539	3000K	10W	9.97W	756	76lm/W	90mm
IP RATING	20	EPU-DL-8614*	4000K	13W*	13.19W	1036	79lm/W	90mm
LIFETIME (L ₇₀)	>50,000hrs							
WARRANTY	3 Years							

*13W model not for use in abatement schemes

*Dimensions: 110mm wide x 31mm high (90mm cut-out model)

85mm wide x 31mm high (70mm cut-out model)

VEET Approved VIC	ESS Approved NSW	EEIS Approved ACT	REES Approved SA	SAA	NATA	RCM
-------------------------	------------------------	-------------------------	------------------------	-----	------	-----

RESIDENTIAL SOLUTIONS
LED DOWNLIGHTS



TRI-COLOUR SERIES

Take the worry out of colour choice with the Downlight Luminaire Tri-Colour Series. The luminaire allows you to change colour between warm white, cool white and daylight at the flick of a switch. All colour changes are made at the point of the on/off switch allowing you to change colours at any time.

Simple instructions included.

FEATURES

- 3000K, 4000K and 6000K in the one luminaire
- No need for a remote control
- Broad beam angle with no shadowing
- Low profile, fits narrow ceiling cavities
- Compatible with TRIAC dimmers
- Available in 70mm and 90mm cut-outs
- IES files available on request

CHARACTERISTICS

POWER FACTOR	>0.9	MODEL NUMBER	WATTAGE	LUMENS	CUT-OUT SIZE
CRI	>80	EP-TRI-107	10W	600-700	70mm
BEAM ANGLE	60°	EP-TRI-109	10W	600-700	90mm
DIMMABLE	Yes	EP-TRI-139	13W*	800-950	90mm
IP RATING	20	*13W model not for use in abatement schemes			
LIFETIME (L70)	>50,000hrs				
WARRANTY	3 Years				



RESIDENTIAL SOLUTIONS
LED DOWNLIGHTS



ANTI-GLARE SERIES

The Anti-Glare Downlight Series LED lamp and driver kit is specifically designed to reduce glare and provide balanced, comfortable lighting in any home or workplace.

FEATURES

- Complete replacement kit
- Frosted, recessed, low-glare design
- Tilt gimbal
- Compatible with TRIAC dimmers
- IES files available on request

CHARACTERISTICS

POWER FACTOR	>0.9	MODEL NUMBER	CCT	WATTAGE	LCP	LUMENS	EFFICACY	CUT-OUT SIZE
CRI	>80	EP-AG3-109	3000K	10W	9.75W	720	74lm/W	90mm
BEAM ANGLE	60°	EP-AG4-109	4000K	10W	9.82W	730	74lm/W	90mm
DIMMABLE	Yes	Dimensions: 110mm wide x 42mm high						
IP RATING	20							
LIFETIME (L70)	>50,000hrs							
WARRANTY	3 Years							





RESIDENTIAL SOLUTIONS
LED BULBS



TRADITIONAL SERIES

EP’s LED A-Bulbs are the perfect upgrade from traditional incandescent or CFL general lighting bulbs. Available in a range of wattages, these highly efficient bulbs are bright, instantaneous and crisp.

FEATURES

- Broad beam angle without shadowing
- Frosted diffuser
- Traditional light bulb aesthetics
- Long lifetime

CHARACTERISTICS

POWER FACTOR	>0.9	MODEL NUMBER	CCT	DIMMABLE	BASE	WATT	LCP	LUMENS	EFFICACY
CRI	>80	EPX-A-8904	3000K	No	B22	7W	6.95W	582	84lm/W
BEAM ANGLE	240°	EPX-A-8911	3000K	No	E27	7W	6.95W	582	84lm/W
IP RATING	20	EPX-A-9031	3000K	Yes	E27	10W	9.94W	880	89lm/W
LIFETIME (L70)	>50,000hrs	EPX-A-9017	3000K	No	E27	10W	9.72W	909	94lm/W
WARRANTY	3 Years								

VEET Approved VIC	ESS Approved NSW	EEIS Approved ACT	REES Approved SA	SAA	NATA	RCM
-------------------------	------------------------	-------------------------	------------------------	-----	------	-----

RESIDENTIAL SOLUTIONS
LED BULBS



LM84 SERIES

The LM84 A-Bulb series uses the latest generation LED technology and performs at an incredible 100+ lumens per watt, the cutting edge of lighting efficiency. Available in traditional light bulb shapes and smaller candle and round bulbs to suit chandeliers.

FEATURES

- NSW HEER approved
- Broad beam angle without shadowing
- Frosted diffuser
- Traditional light bulb aesthetics
- Long lifetime

CHARACTERISTICS

POWER FACTOR	>0.9	MODEL NUMBER	CCT	DIMMABLE	BASE	WATT	LCP	LUMENS	EFFICACY
CRI	>80	EP-ES8-3	3000K	No	E27	8W	7.95W	880	111lm/W
BEAM ANGLE	175°	EP-BC8-3	3000K	No	B22	8W	7.95W	880	111lm/W
IP RATING	20	EP-ES8-D3	3000K	Yes	E27	8W	7.63W	884	116lm/W
LIFETIME (L70)	>50,000hrs	EP-BC8-D3	3000K	Yes	B22	8W	7.63W	884	116lm/W
WARRANTY	2 Years	EP-ES11-3	3000K	No	E27	11W	11.37W	1,193	105lm/W
		EP-BC11-3	3000K	No	B22	11W	11.37W	1,193	105lm/W
		EP-ES11-D3	3000K	Yes	E27	11W	10.89W	1,214	111lm/W
		EP-BC11-D3	3000K	Yes	B22	11W	10.89W	1,214	111lm/W

*All models available in 4000K on request

VEET Approved VIC	ESS Approved NSW	EEIS Approved ACT	REES Approved SA	SAA	NATA	RCM
-------------------------	------------------------	-------------------------	------------------------	-----	------	-----



CANDLE AND ROUND SERIES

The Candle and Round A-Bulbs use the latest generation LED technology. Available in traditional light bulb shapes and smaller candle and round bulbs to suit chandeliers.



FEATURES

- NSW HEER approved
- Broad beam angle without shadowing
- Frosted diffuser
- Traditional light bulb aesthetics
- Long lifetime



PAR38 LIGHTS

EP's LED PAR38 light range are durable, weatherproof, highly-efficient, direct upgrades for common 75W to 150W PAR38 floodlights.

Offering 110+ lumens per watt efficacy, these lamps deliver a combination of high energy savings with crisp, bright, even light output.



FEATURES

- Highly efficient >100lm/W
- Lightweight, thermally-resistant polycarbonate body
- IP44 rating

CHARACTERISTICS

POWER FACTOR	>0.9	MODEL NUMBER	CCT	DIMMABLE	BASE	WATT	LCP	LUMENS	EFFICACY
CRI	>80	EP-ES3-3	3000K	No	E27	3W	3.05W	325	107lm/W
BEAM ANGLE	175°	EP-BC3-3	3000K	No	B22	3W	3.05W	325	107lm/W
IP RATING	20	EP-SES3-3	3000K	No	E14	3W	3.05W	325	107lm/W
LIFETIME (L ₇₀)	>50,000hrs	EP-SBC3-3	3000K	No	B15	3W	3.05W	325	107lm/W
WARRANTY	3 Years	EP-ES5-D3	3000K	Yes	E27	5W	4.93W	448	91lm/W
3W available in Candle and Round (non-dimmable)		EP-BC5-D3	3000K	Yes	B22	5W	4.93W	448	91lm/W
5W available in Candle (dimmable)		EP-SES5-D3	3000K	Yes	E14	5W	4.93W	448	91lm/W
		EP-SBC5-D3	3000K	Yes	B15	5W	4.93W	448	91lm/W

CHARACTERISTICS

POWER FACTOR	>0.9	MODEL NUMBER	CCT	DIMMABLE	WATT	LCP	LUMENS	EFFICACY
CRI	>80	EP-LP38-12	3000K	No	12W	11.63W	1,329	114lm/W
BEAM ANGLE	33°	EP-LP38-19	6000K	No	19W	18.70W	2,066	110lm/W
BASE	E27	EP-LP38-22	3000K	No	21W	21.0W	2,300	110lm/W
IP RATING	44							
LIFETIME (L ₇₀)	>50,000hrs							
WARRANTY	3 Years							

VEET Approved VIC	ESS Approved NSW	EEIS Approved ACT	REES Approved SA	SAA	NATA	RCM
-------------------------	------------------------	-------------------------	------------------------	-----	------	-----

VEET Approved VIC	ESS Approved NSW	EEIS Approved ACT	REES Approved SA	SAA	NATA	RCM
-------------------------	------------------------	-------------------------	------------------------	-----	------	-----

RESIDENTIAL SOLUTIONS
LED BULBS



VINTAGE SERIES

A retro filament-style globe with a soft, warm light, the Vintage LED Bulbs are perfect for mood lighting and ambience. Dimmable to allow soft, low light levels and with a colour temperature less than 2700K, our Vintage LED Bulbs provide a warm, yellow glow at a fraction of the energy consumption of traditional filament bulbs.



FEATURES

- Retro filament-style look
- Soft, warm light <2700K
- Dimmable 4.5W
- G80 and ST65 shapes
- E27 and B22 bases

RESIDENTIAL SOLUTIONS
LED OYSTER LIGHTS



TRI-COLOUR SERIES

The LED Oyster Lights are a highly-efficient, complete luminaire replacement for older fluorescent oyster fittings. Available in 300mm and 400mm diameters in a range of wattages, our LED Oyster Lights feature a convenient tri-switchable colour temperature offering 3000K, 4000K and 5700K out of the same luminaire. No remote required, you can simply change colours using a physical switch on the luminaire. Additionally, our LED Oyster Lights are dimmable making them versatile and ideal for both residential and commercial applications.



FEATURES

- TRIAC dimmable
- Switchable CCT 3000K/4000K/5700K using a physical switch on the luminaire
- 300mm and 400mm diameter options
- Broad 120° beam angle

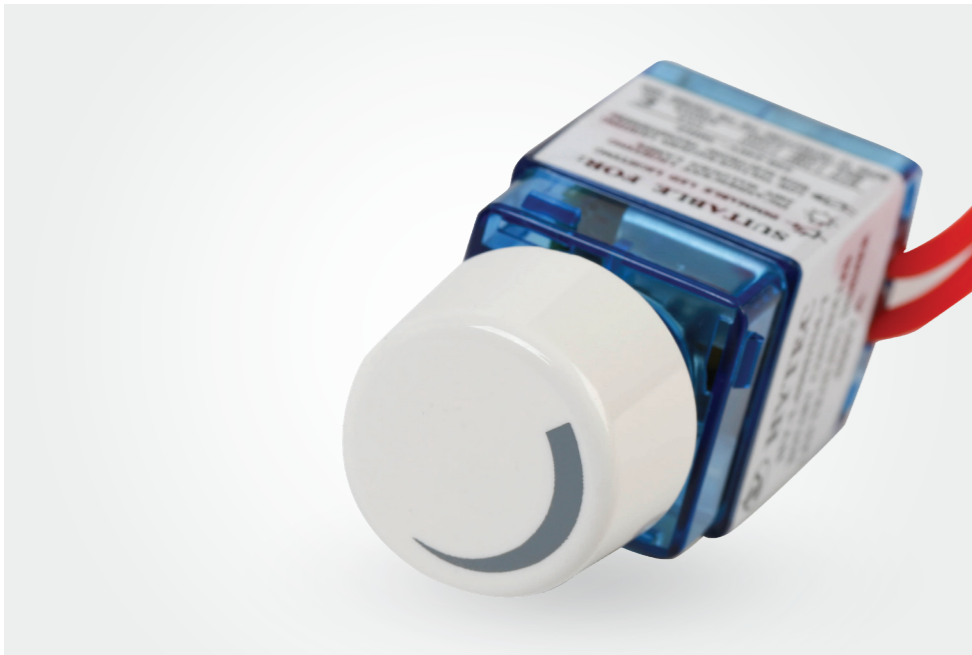
CHARACTERISTICS

POWER FACTOR	>0.9	MODEL NUMBER	CCT	SHAPE	BASE	WATT	LCP	LUMENS	EFFICACY
CRI	>80	EP-ANST65-BC5D	<2700K	Teardrop ST65	B22 (BC)	5W	5.05W	325	64lm/W
DIMMABLE	Yes	EP-ANST65-ES5D	<2700K	Teardrop ST65	E27 (ES)	5W	5.05W	325	64lm/W
IP RATING	20	EP-ANG80-BC5D	<2700K	Round G80	B22 (BC)	5W	5.05W	325	64lm/W
LIFETIME (L ₇₀)	>50,000hrs	EP-ANG80-ES5D	<2700K	Round G80	E27 (ES)	5W	5.05W	325	64lm/W
WARRANTY	3 Years								

CHARACTERISTICS

POWER FACTOR	>0.9	MODEL NUMBER	CCT	WATT	SIZE	LCP	LUMENS	EFFICACY
CRI	>80	EP-LOS-18	3000K/4000K/5700K switchable	18W	300mm diameter	17.71W	1839	104lm/W
BEAM ANGLE	120°	EP-LOS-25	3000K/4000K/5700K switchable	25W	300mm diameter	24.59W	2474	101lm/W
DIMMABLE	Yes	EP-LOS-30	3000K/4000K/5700K switchable	30W	400mm diameter	28.47W	2938	103lm/W
IP RATING	54							
LIFETIME (L ₇₀)	>50,000hrs							
WARRANTY	5 Years							





DIMMERS

Our LED Dimmers are designed using technology to provide smooth, even dimming for our complete LED product range. Ideal as a dimmer for new installations or as a simple upgrade replacement for older dimmers which are not compatible with LEDs.



FEATURES

- Trailing edge dimmer specifically designed for LEDs
- Smooth dimming across a wide dimming range
- Compatible with all Emerald Planet LED lights
- Trailing edge type, rated for 400VA load
- Must be installed by a licensed electrician



STANDBY POWER CONTROLLERS
SUPER AV

The Emerald Planet Standby Power Controller (SPC) is easy to install, connecting to your television it is designed to shut down peripheral appliances when the TV or computer is turned off or are inactive, saving you power and money.

Using state of the art design and technology the Emerald Planet Standby Power Controllers (SPC) all incorporate 6 plug outputs, surge and overload protection.

FEATURES

- Standby power saver
- 6 socket outlets:
 - 1 x master socket
 - 4 x slave sockets
 - 1 x always on power socket
- 1 hour automatic shutdown
- Surge/overload protection

CHARACTERISTICS

WARRANTY	1 Year	MODEL NUMBER	DESCRIPTION	1 HOUR AUTO-SHUTDOWN
		EP4357	Super AV (with 1 hour automatic shutdown)	Yes



RESIDENTIAL SOLUTIONS
FAN SEAL



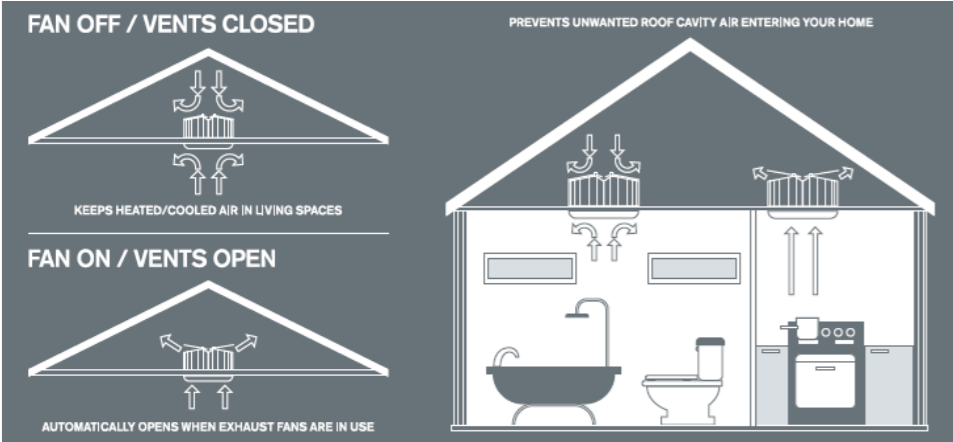
FAN SEAL

The Emerald Planet Fan Seal is an innovative way to block unwanted air flow between the ceiling space and your home through ceiling exhaust fans when they are switched off.

The simple one-way vents allow normal airflow when the fan is on.

FEATURES

- Can be installed from inside the house - no ceiling access required



SPECIFICATIONS

MODEL NUMBER	EP-FANSEAL
MATERIAL	Lightweight, fire-resistant polycarbonate

VEET
Approved
VIC

ESS
Approved
NSW

EEIS
Approved
ACT

REES
Approved
SA





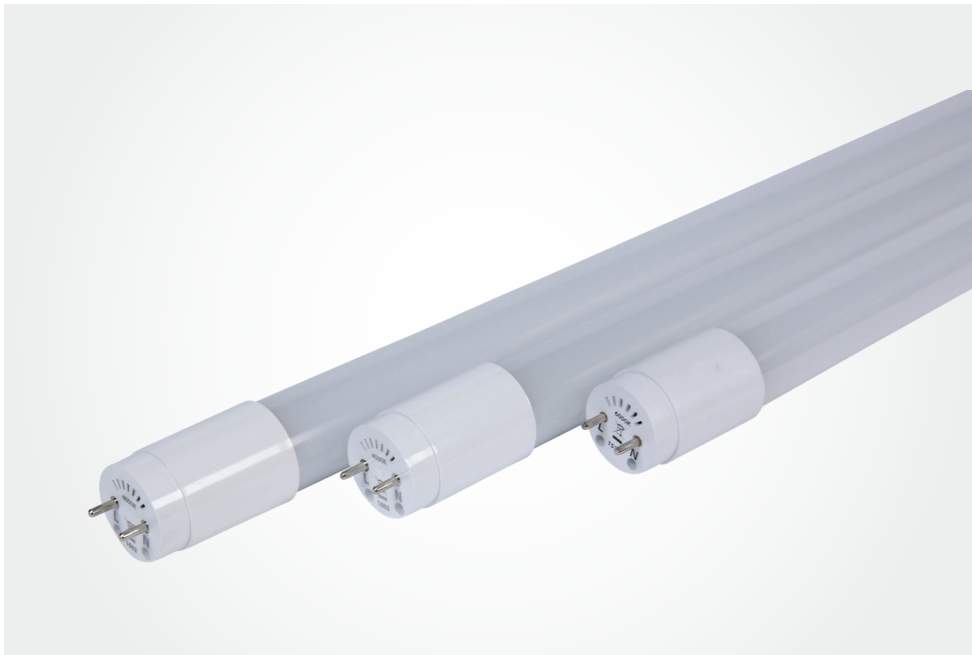
COMMERCIAL SOLUTIONS

LED TUBES

LED BATTENS

LED PANELS

LED SHOPLIGHTS



T8 SERIES

EP's T8 LED tubes represent the latest technology and highest efficiency for upgrading traditional T8 fluorescent tubes. Available in a range of wattages, materials and lengths to suit different environments. EP tubes are field tested and proven.

ACCESSORIES

- Inline HRC fuse
- Lockable HRC starter
- Starter sockets

FEATURES

- Available in 4000K and 6000K
- 600mm, 1200mm and 1500mm options
- Broad 175° beam angle for superior light distribution
- Fully ERAC compliant with supplied HRC fuse LED starter and optional inline HRC fuse
- Extra safety thermal cut-out fuse
- Long lifetime, high reliability
- IES files available on request

CHARACTERISTICS

POWER FACTOR	>0.9	MODEL NUMBER	CCT	DIMENSIONS	WATT	MATERIAL	LCP	LUMENS	EFFICACY
CRI	>80	EP-TPC6-4K EP-TPC6-6K	4000K/ 6000K	600mm	6W	PC	6.35W	977	154lm/W
BEAM ANGLE	175°	EP-TPC12-4K EP-TPC12-6K	4000K/ 5000K/ 6000K	1200mm	11W	PC	11.28W	1,856	165lm/W
DIMMABLE	No	EP-TPC16-4K EP-TPC16-6K	4000K/ 6000K	1200mm	16W	PC	15.15W	2,089	138lm/W
IP RATING	20	EP-TPC1516-4K EP-TPC1516-6K	4000K/ 6000K	1500mm	16W	PC	16.08W	2,458	153lm/W
LIFETIME (L ₇₀)	>60,000hrs								
WARRANTY	3 Years								

VEET Approved VIC	EEIS Approved ACT	REES Approved SA	SAA	NATA	RCM
-------------------------	-------------------------	------------------------	-----	------	-----



T5 SERIES

EP's T5 LED tubes represent the latest technology and highest efficiency for upgrading traditional T5 fluorescent tubes. Available in a range of wattages and lengths to suit different environments. EP tubes are field tested and proven.

ACCESSORIES

- Inline HRC fuse
- Lockable HRC starter
- Starter sockets

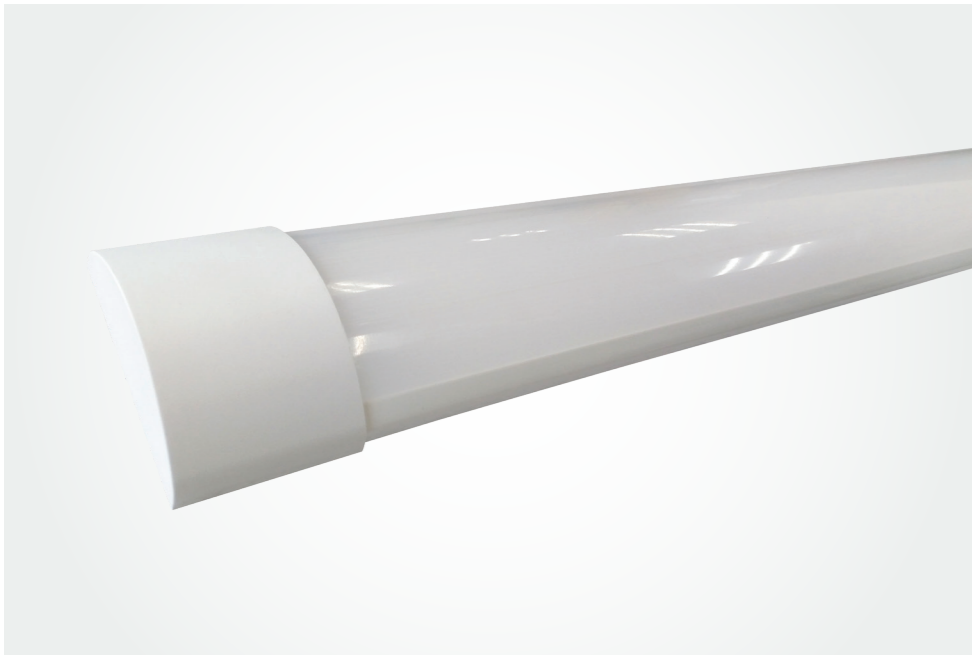
FEATURES

- 600mm and 1200mm options
- 110° beam angle for superior light distribution
- Type A LED tube for modification type installation only
- Long lifetime, high reliability
- IES files available on request

CHARACTERISTICS

POWER FACTOR	>0.9	MODEL NUMBER	CCT	DIMENSIONS	WATTAGE	LCP	LUMENS	EFFICACY
CRI	>80	EP-T5600-7W	5000K	600mm	7W	7.35W	945	135lm/W
BEAM ANGLE	110°	EP-T512-14W	5000K	1200mm	14W	13.72W	1,960	140lm/W
DIMMABLE	No							
IP RATING	20							
LIFETIME (L ₇₀)	>60,000hrs							
WARRANTY	3 years							

VEET Approved VIC	EEIS Approved ACT	REES Approved SA	SAA	NATA	RCM
-------------------------	-------------------------	------------------------	-----	------	-----



SLIMLINE SERIES

The Slimline Series LED Batten is compact and unique. It is an ideal surface-mounted, complete LED upgrade to replace fluorescent battens. Combining its low-profile design and broad beam angle, the Slimline LED Batten is a bright, modern, efficient lighting solution with an elegant, minimalistic design.

FEATURES

- Lightweight
- Slimline
- Easy to install
- Comes with flex and plug
- IES files available on request

CHARACTERISTICS

POWER FACTOR	>0.9
CRI	>80
BEAM ANGLE	120°
DIMMABLE	No
IP RATING	20
LIFETIME (L70)	>60,000hrs
WARRANTY	3 years

MODEL NUMBER	CCT	DIMENSIONS	WATT	LCP	LUMENS	EFFICACY
EP-WT18-6	4000K/6000K	1200mm	18W	18.08W	2178	120lm/W
EP-LB1220-25	5000K	1200mm	24W	23.81W	3266	137lm/W

VEET Approved VIC	ESS Approved NSW	EEIS Approved ACT	REES Approved SA	SAA	NATA	RCM
-------------------------	------------------------	-------------------------	------------------------	-----	------	-----



NAUTICA SERIES

The Nautica Series LED battens are IP65 waterproof, designed as ideal upgrades for replacing existing surface mounted or suspended fluorescent battens. With lightweight, durable construction, the Nautica is simple to install and easy to handle. At 130 lumens per watt, Nautica’s significant energy savings over old fluorescent battens deliver short return on investment and a maintenance-free lighting.

Available in 600mm and 1200mm and range of wattages. Mounting brackets are included.

FEATURES

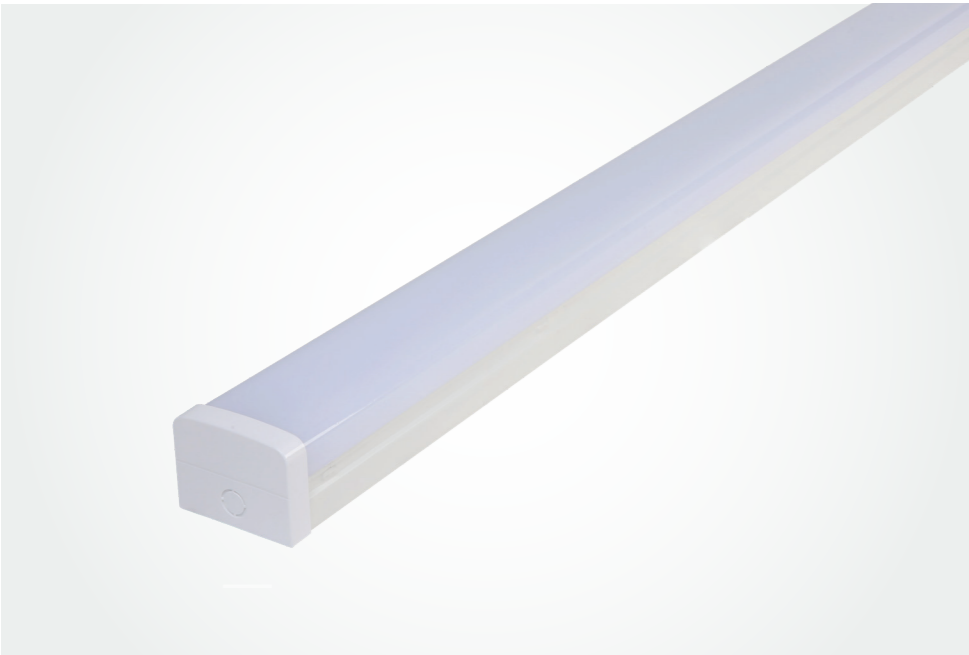
- Lightweight, polycarbonate finish
- Available in 600mm and 1200mm
- Mounting brackets included
- Secure mounting clips with safety cable and IP65 connector included
- IP65 rating
- IK08 rating

CHARACTERISTICS

POWER FACTOR	>0.9
CRI	>80
BEAM ANGLE	110°
IP RATING	65
DIMMABLE	No
LIFETIME (L70)	>60,000hrs
WARRANTY	5 Years

MODEL NUMBER	CCT	DIMENSIONS	WATT	LCP	LUMENS	EFFICACY
EP-LB665-16	5000K	600mm	16W	15.83W	2151	136lm/W
EP-LB1265-24	5000K	1200mm	24W	23.62W	3063	130lm/W
EP-LB1265-30	5000K	1200mm	30W	29.24W	3663	126lm/W

VEET Approved VIC	ESS Approved NSW	EEIS Approved ACT	REES Approved SA	SAA	NATA	RCM
-------------------------	------------------------	-------------------------	------------------------	-----	------	-----



XL SERIES

The XL Series LED Batten is an ideal direct replacement for single and twin fluorescent battens. At 130 lumens per watt efficacy, the XL delivers ultra high efficiency and energy savings. With sturdy construction the XL is ready to surface mount or can be suspended.

FEATURES

- Traditional batten profile
- Surface mountable or suspendable
- Removable end caps
- No external junction box required
- Broad 115° beam angle
- Available in 600mm, 1200mm (4000K and 6000K)
- IES files on available on request

CHARACTERISTICS

POWER FACTOR	>0.9
CRI	>80
BEAM ANGLE	115°
DIMMABLE	No
IP RATING	20
LIFETIME (L70)	>60,000hrs
WARRANTY	5 Years

MODEL NUMBER	CCT	DIMENSIONS	WATT	LCP	LUMENS	EFFICACY
EP-LB600-8	5000K	600mm	8W	8.16W	1,091	134lm/W
EP-LB1200-19	5000K	1200mm	19W	19.04W	2,545	134lm/W
EP-LB1200-25	5000K	1200mm	25W	24.78W	3,204	129lm/W
EP-LB1200-36	5000K	1200mm	36W	35.89W	4,641	129lm/W

VEET Approved VIC	ESS Approved NSW	EEIS Approved ACT	REES Approved SA	SAA	NATA	RCM
-------------------------	------------------------	-------------------------	------------------------	-----	------	-----



COMMANDER SERIES

The Commander LED Panel is a modern, slimline panel for commercial and office space applications. Its pearl white diffuser has no shadowing allowing for a modern aesthetic finish. Driving maximum efficacy, the Commander Panel provides the most efficient and affordable LED panel solution.

FEATURES

- Glare rating = UGR <22
- Pearl white diffuser and frame
- No shadowing
- High efficacy
- Flex and plug included
- IES files available on request
- Top hat grid compatible

CHARACTERISTICS

POWER FACTOR	>0.9
UGR	<22
CRI	>80
BEAM ANGLE	110°
DIMMABLE	No
IP RATING	20
LIFETIME (L70)	>60,000hrs
WARRANTY	5 Years

MODEL NUMBER	CCT	DIMENSIONS	WATT	LCP	LUMENS	EFFICACY
EP-PL123-24	5000K	1192x292mm	24W	23.94W	3,015	126lm/W

VEET Approved VIC	ESS Approved NSW	EEIS Approved ACT	REES Approved SA	SAA	NATA	RCM
-------------------------	------------------------	-------------------------	------------------------	-----	------	-----



EXECUTIVE SERIES

The Executive LED Panel is a modern, slimline panel for commercial office applications. Its pearl white diffuser has no shadowing allowing for a modern aesthetic finish. Its light weight body, high quality LED chips and robust LED driver is supported by a strong 5 year warranty.

FEATURES

- Glare rating = UGR <22
- Pearl white diffuser and frame
- No shadowing
- High efficacy
- Top hat grid compatible
- Flex and plug included
- IES files available on request

CHARACTERISTICS

POWER FACTOR	>0.9	MODEL NUMBER	CCT	DIMENSIONS	WATT	LCP	LUMENS	EFFICACY
UGR	<22	EP-PL36-18	5000K	595x295mm	18W	17.73W	1,980	112lm/W
CRI	>80	EP-PL66-28	5000K	595x595mm	28W	28.12W	3,030	108lm/W
BEAM ANGLE	120°	EP-PL123-28	5000K	1192x292mm	28W	28.12W	3,030	108lm/W
DIMMABLE	No	EP-PL126-50	5000K	1195x595mm	50W	48.28W	5,487	114lm/W
IP RATING	20							
LIFETIME (L70)	>60,000hrs							
WARRANTY	5 Years							

VEET Approved VIC	ESS Approved NSW	EEIS Approved ACT	REES Approved SA	SAA	NATA	RCM
-------------------------	------------------------	-------------------------	------------------------	-----	------	-----



AMBASSADOR SERIES
(ANTI-GLARE)

The Ambassador LED Panel is a premium, modern, slimline panel designed for low glare applications such as schools, universities or hospitals. Offering comfortable, even light output which won't fatigue the eyes.

Its high efficiency driver and LED chips allow for high efficacy, enabling the consumer to maximise energy savings.

Dimmable Driver Accessory:
- Compatible with the 24W panel

FEATURES

- Glare rating = UGR <19
- Pearl white diffuser and frame
- No shadowing
- High efficacy
- Top hat grid compatible
- Flex and plug included
- IES files available on request

CHARACTERISTICS

POWER FACTOR	>0.9	MODEL NUMBER	CCT	DIMENSIONS	WATT	LCP	LUMENS	EFFICACY
UGR	<19	EP-AGP66-20	4000K/6000K	595x295mm	15W	15.64W	1,800	120lm/W
CRI	>80	EP-AGP66-24	4000K/6000K	595x595mm	24W	23.91W	2,791	117lm/W
BEAM ANGLE	120°	EP-AGP123-24	4000K/6000K	1192x292mm	24W	23.83W	2,693	113lm/W
DIMMABLE	No	EP-AGP126-40	4000K/6000K	1195x595mm	40W	40.00W	4,680	117lm/W
IP RATING	20							
LIFETIME (L70)	>60,000hrs							
WARRANTY	5 Years							

- Model Number: LCA 25W 350-1050mA one4all SC PRE
- Compatible Systems: Dali/DSI/switchDIM/corridorFUNCTION
- Brand: Tridonic
- Not approved to create energy efficiency certificates

VEET Approved VIC	ESS Approved NSW	EEIS Approved ACT	REES Approved SA	SAA	NATA	RCM
-------------------------	------------------------	-------------------------	------------------------	-----	------	-----



SURFACE MOUNTING FRAME

To fit 1192x292mm and 595x595mm size EP panels.



AIR-CONDITIONING FRAME

To fit 1192x292mm size EP panels in 1200x400mm and 1200x600mm ceiling grids.



RECESSED MOUNTING FRAME

To fit 1192x292mm and 595x595mm size EP panels in 1200x300mm and 600x600mm ceiling grids.

SURFACE MOUNTING FRAME

MODEL NUMBER	DIMENSIONS
EP-PF123	1210x310mm
EP-PF63	610x310mm
EP-PF66	613x613mm

RECESSED MOUNTING FRAME

MODEL NUMBER	DIMENSIONS
EP-RPF123	1270x370mm
EP-RPF63	670x370mm
EP-RPF66	673x673mm



RECTANGULAR SERIES

The EP range of Rectangular Shoplights come in either aluminium or light weight polycarbonate construction. All models have a wide face-plate for easy installation. With a rotatable lens the shoplight can be rotated to cast optimal light distribution.

Available in:

- 18W and 24W Polycarbonate (4000K and 6000K)
- 35W Aluminium (4000K and 5700K)

FEATURES

- Broad face-plate
- Rotatable lens
- Polycarbonate and aluminium options
- High efficacy
- Flex and plug included
- IES files available on request

CHARACTERISTICS

POWER FACTOR	>0.9	MODEL NUMBER	CCT	DIMENSIONS	WATT	LCP	LUMENS	EFFICACY
CRI	>80	EP-PCRS1-186	5000K	227x130mm	18W	18.06W	2,139	118lm/W
BEAM ANGLE	120°	EP-PCRS1-246	5000K	227x130mm	24W	24.32W	3,165	130lm/W
DIMMABLE	No	EP-PCRS1-244	4000K	227x130mm	24W	24.32W	3,165	130lm/W
IP RATING	20	EPS-RTSLD-0236	4000K	227x130mm	35W	34.41W	3,565	104lm/W
LIFETIME (L70)	>60,000hrs	EPS-RTSLD-0250	5700K	227x130mm	35W	34.41W	3,565	104lm/W
WARRANTY	5 Years							

VEET Approved VIC	ESS Approved NSW	EEIS Approved ACT	REES Approved SA	SAA	NATA	RCM
-------------------------	------------------------	-------------------------	------------------------	-----	------	-----



ROUND FIXED SERIES

The Round Fixed Shoplight comes in a range of cut-out sizes and wattages, as well as dimmable and non-dimmable options to allow for various installations. All models have a pearl white diffuser with no shadowing.

FEATURES

- Range of wattages and colours (CCT)
- Range of cut-out dimensions
- Dimmable and non-dimmable options
- Pearl white diffuser (no shadowing)
- Light weight for easy installation
- High efficacy
- Flex and plug included
- IES files available on request

CHARACTERISTICS

POWER FACTOR	>0.9	MODEL NUMBER	CCT	DIMMABLE	DIMENSIONS	WATT	LCP	LUMENS	EFFICACY
CRI	>80	EP-PC90-3K	4000K	Yes	150mm	9W	8.76W	800	95lm/W
BEAM ANGLE	120°	EP-PC90-6K	5000K	Yes	150mm	9W	8.76W	800	95lm/W
IP RATING	20	EP-CFSL-D156	5000K	Yes	200mm	15W	15.40W	1,840	119lm/W
LIFETIME (L ₇₀)	>60,000hrs	EP-CFSL-254	4000K	No	200mm	25W	24.36W	3,165	130lm/W
WARRANTY	5 Years	EP-CFSL-256	5000K	No	200mm	25W	24.36W	3,165	130lm/W

VEET Approved VIC	ESS Approved NSW	EEIS Approved ACT	REES Approved SA	SAA	NATA	RCM
-------------------------	------------------------	-------------------------	------------------------	-----	------	-----



ROUND TILT SERIES

The Round Tilt Shoplight is a stylish, modern and highly adjustable, energy efficient LED solution. Offering bright, directional lighting, the gimbal mechanism allows the light to rotate through a variety of angles making it ideal for directing working light to where it is needed.

FEATURES

- 360° pivot gimballed face-plate
- Pearl white diffuser
- High efficacy
- Range of colours (CCT)
- Flex and plug included
- IES files available on request

CHARACTERISTICS

POWER FACTOR	>0.9	MODEL NUMBER	CCT	DIMENSIONS	WATT	LCP	LUMENS	EFFICACY
CRI	>80	EP-CTSLD-1233	4000K	195x140mm	35W	34.80W	2,923	84lm/W
BEAM ANGLE	60°	EP-CTSLD-1257	5700K	195x140mm	35W	34.80W	2,923	84lm/W
IP RATING	20							
LIFETIME (L ₇₀)	>60,000hrs							
WARRANTY	5 Years							

VEET Approved VIC	ESS Approved NSW	EEIS Approved ACT	REES Approved SA	SAA	NATA	RCM
-------------------------	------------------------	-------------------------	------------------------	-----	------	-----





**INDUSTRIAL
SOLUTIONS**

LED HIGH BAYS

LED FLOODLIGHTS

INDUSTRIAL SOLUTIONS
LED HIGH BAY



HIGH-Q SERIES
(INCORPORATED MOTION &
DAYLIGHT SENSOR)

The High-Q High Bay ticks all the right boxes. The sleek, sophisticated look allows for installation across retail, commercial and industrial spaces. The High-Q's recessed refractive lens allows the luminaire to achieve a very low UGR rating (UGR<22) resulting in low glare. With its integrated dimming motion and daylight sensor (with on/off switch) the High-Q offers the consumer the option to introduce additional energy savings through smart control gear.

FEATURES

- Recessed refractive diffuser (UGR<22)
- Sleek sophisticated black aesthetics
- Integrated motion and daylight sensor (with on/off switch)
- High efficacy
- Flex and plug included
- IES files available on request
- 90W and 110W: 300x109mm, 2.6kg
- 130W and 150W: 320x128mm, 3.2kg
- Full cut-off design

Product	LCPFull	LCPDim	LCP%
90W	90.83	23.00	25.32%
110W	109.70	27.50	25.07%
130W	131.30	33.10	25.21%
150W	150.00	38.20	25.47%

CHARACTERISTICS

POWER FACTOR	>0.9	MODEL NUMBER	CCT	DIMENSIONS	WATT	LCP	SENSOR	LUMENS	EFFICACY
CRI	>80	EP-HQS-90	5000K	300x109mm	90W	90.83	Yes	13,625lm	150lm/W
BEAM ANGLE	75°	EP-HQS-110	5000K	300x109mm	110W	109.70	Yes	16,678lm	152lm/W
DIMMABLE	via sensor	EP-HQS-130	5000K	320x128mm	130W	131.30	Yes	19,695lm	150lm/W
IP RATING	20	EP-HQS-150	5000K	320x128mm	150W	150.00	Yes	22,537lm	150lm/W
LIFETIME (L70)	>70,000h								
WARRANTY	5 Years								

VEET Approved VIC	ESS Approved NSW	EEIS Approved ACT	REES Approved SA	SAA	NATA	RCM
-------------------------	------------------------	-------------------------	------------------------	-----	------	-----

INDUSTRIAL SOLUTIONS
LED HIGH BAY



EMERALD EYE SERIES

The Emerald EYE High Bay has been designed from the ground up to combine the highest standards of lighting performance and reliability with a rich list of features to maximise ease of installation, transportation and recycling. The result is a luminaire which delivers a superior lighting outcome whilst enabling fast, efficient delivery and installation.

FEATURES

- Meanwell driver
- Easy grip mounting bracket, easy to install
- Low profile, lightweight design (3.9kg)
- Highly efficient >150lm/W
- Adjustable arm, can be used as a high bay or floodlight
- All cardboard recycling packaging for easy disposal
- Shatterproof diffuser
- IP65 rating
- Suited to ambient temperatures of -20°C to 60°C
- Full cut-off design

CHARACTERISTICS

POWER FACTOR	>0.9	MODEL NUMBER	CCT	DIMENSIONS EXCLUDING BRACKET	WATT	LCP	LUMENS	EFFICACY
CRI	>80	EP-LHB-50	5000K	320x50mm	55W	54.18W	8,246	152lm/W
BEAM ANGLE	110°	EP-LHB-70	5000K	320x50mm	70W	67.02W	10,221	153lm/W
DIMMABLE	1-10V	EP-LHB-90	5000K	320x50mm	85W	86.63W	13,185	152lm/W
IP RATING	65	EP-LHB-100	5000K	320x50mm	100W	100.30W	15,155	151lm/W
LIFETIME (L70)	>70,000h	EP-LHB-110	5000K	320x50mm	115W	116.00W	17,435	150lm/W
WARRANTY	5 Years	EP-LHB-130	5000K	320x50mm	130W	133.40W	20,464	153lm/W
		EP-LHB-150	5000K	320x50mm	155W	155.80W	23,417	150lm/W

VEET Approved VIC	ESS Approved NSW	EEIS Approved ACT	REES Approved SA	SAA	NATA	RCM
-------------------------	------------------------	-------------------------	------------------------	-----	------	-----



MOTION SENSOR

FEATURES

- Daylight sensor
- Dimming levels
- IP65 rating
- Tool free connection to Emerald Eye



ALUMINIUM REFLECTOR

FEATURES

- Beam angle 70°
- Installation via 4 x screws into the face-plate
- Dimension - 410x150mm
- Full cut-off design





SLIMLINE SERIES

The Slimline Floodlight range, with optional integrated sensor, is lightweight and easy to install. Using Phillips LED chips and delivering 120+ lumens per watt, this highly efficient floodlight combines high energy savings and crisp, even light distribution across its broad beam angle.

With an IP65 rating and suitability across a wide temperature range, the Slimline Floodlight is built to withstand the elements.



FEATURES

- Optional integrated motion and daylight sensor (with on/off switch)
- Lightweight slimline
- High efficacy
- Flex and plug included
- IP65 rating
- IES files available on request
- Full cut-off design



TORRENT SERIES

Designed for performance, reliability and the ability to manage the harsh weather conditions of Australia, the Torrent Floodlight is a perfect option for commercial applications. Its high efficacy of 130+ lumens per watt delivers optimum performance, complemented by its diffuse lens and adjustable bracket which enables easy installation across a range of applications.

With an IP65 rating and tolerance across a wide ambient temperature range, the Torrent Series is built to last.



FEATURES

- High efficacy
- IP65 rating
- Adjustable bracket for easy installation
- Flex and plug included
- IES files available on request
- Full cut-off design

ACCESSORIES

- Glare guard
- Protective wire mesh guard

CHARACTERISTICS

POWER FACTOR	>0.9	MODEL NUMBER	CCT	DIMENSIONS	WATT	LCP	LUMENS	EFFICACY
CRI	>80	EP-FL-15	5000K	148x38x117mm	15W	14.04W	1,593	120lm/W
BEAM ANGLE	110°	EP-FL-30	5000K	200x43x149mm	30W	30.33W	3,770	120lm/W
IP RATING	65	EP-FL-50	5000K	250x51x188mm	50W	50.96W	6,822	120lm/W
LIFETIME (L ₇₀)	>70,000h	WITH SENSOR						
WARRANTY	5 Years	EP-FL-15S	5000K	148x38x117mm	15W	14.04W	1,593	120lm/W
*EP-FL-30s has incorporated motion and daylight sensor.		EP-FL-30S	5000K	200x43x149mm	30W	30.33W	3,770	120lm/W

CHARACTERISTICS

POWER FACTOR	>0.9	MODEL NUMBER	CCT	DIMENSIONS	WATT	LCP	LUMENS	EFFICACY
CRI	>80	EP-FL-70	5000K	260x275x102mm	70W	69.81W	9,279	130lm/W
BEAM ANGLE	110°	EP-FL-100	5000K	260x275x102mm	100W	99.32W	13,070	130lm/W
IP RATING	65	EP-FL-150	5000K	296x316x102mm	150W	149W	18,497	130lm/W
LIFETIME (L ₇₀)	>70,000h	WITH SENSOR						
WARRANTY	5 Years	EP-FL-70S	5000K	260x275x102mm	70W	69.81W	9,279	130lm/W





MODULAR SERIES

Designed for high light output environments, incorporating performance, reliability and the ability to manage the harsh weather conditions of Australia, the Modular Floodlight is a perfect option for large commercial applications such as sporting fields, airports etc. Its high efficacy is complemented by its diffuse adjustable lens that allows for a varied light distribution of choice. Its heavy duty adjustable bracket enables easy installation across a range of applications.

FEATURES

- Phillips LED chips and driver
- Highly efficient >130lm/W
- Shatterproof diffuser
- IP65 rating
- 5 year warranty
- Available in 200W to 600W
- Full cut-off design

CHARACTERISTICS

POWER FACTOR	>0.9	MODEL NUMBER	CCT	DIMENSIONS	WATT	LCP	LUMENS	EFFICACY
CRI	>80	EP-MFL-200	5000K	544x258x110mm	200W	200.1W	26,821	134lm/W
BEAM ANGLE	120°	EP-MFL-300	5000K	544x373x110mm	300W	301.3W	40,065	133lm/W
IP RATING	70	EP-MFL-400	5000K	755x373x110mm	400W	401.8W	49,324	123lm/W
LIFETIME (L70)	>70,000h	EP-MFL-600	5000K	755x516x110mm	600W	602.1W	75,645	126lm/W
WARRANTY	5 Years							

VEET Approved VIC	ESS Approved NSW	EEIS Approved ACT	REES Approved SA	SAA	NATA	RCM
-------------------------	------------------------	-------------------------	------------------------	-----	------	-----

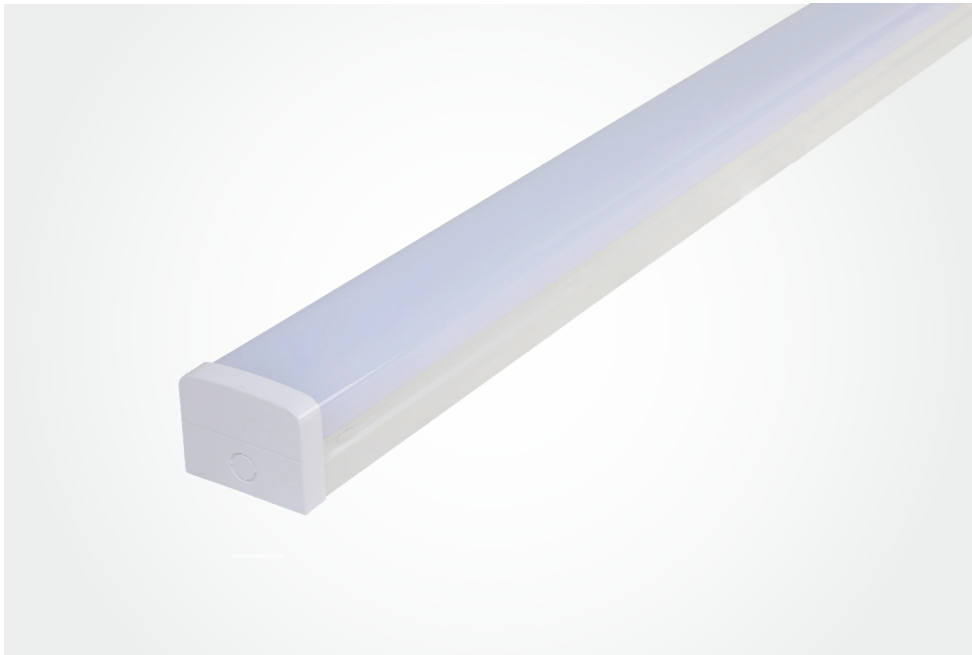




EMERGENCY SOLUTIONS

EMERGENCY LIGHTING





XL SERIES
EMERGENCY BATTEN

The XL Series Emergency Batten with premium, 3-hour backup Lithium Nanophosphate (LiFePO4) battery, is fully compliant to the AS2293 emergency lighting standard.

FEATURES

- Maintained emergency light
- 4.5W emergency power
- 3hr emergency power
- CO:D63 C90:D50

CHARACTERISTICS

POWER FACTOR	>0.9
CRI	>80
BEAM ANGLE	120°
IP RATING	20
LIFETIME (L70)	>70,000h
WARRANTY	3 Years
EMERGENCY	3hrs at 4.5W

MODEL NUMBER	CCT	DIMENSIONS	WATT	LUMENS	EFFICACY
EP-LB600-20E(M)	6000K	600mm	20W	2,381	100lm/W
EP-LB1200-40E(M)	6000K	1200mm	40W	4,681	100lm/W



FIREFLY SERIES
EMERGENCY CEILING

The Firefly Emergency Light is easy to install and supported by a premium, 2-hour backup Lithium Nanophosphate (LiFePO4) battery. They are fully compliant to the AS2293 emergency lighting standard.

FEATURES - D32

- Firefly D32: EP-FF-D32
- 3 year Lithium battery
- 1.8W LED
- Non-maintained mode
- LiFePO4 batteries
- 2hr emergency power
- 6.4V 1500mAh
- CO:D32 C90:D32
- 70mm and 90mm compatible

FEATURES - D50

- Firefly D50: EP-FF-D50
- 3 year Lithium battery
- 1.8W LED
- Non-maintained mode
- LiFePO4 batteries
- 2hr emergency power
- 6.4V 2000mAh
- CO:D50 C90:D50
- 70mm and 90mm compatible

EMERGENCY SOLUTIONS
LIGHTING



FIREBOX

The Firebox Emergency Exit Sign has uniform illumination across the surface (no shadowing) featuring a premium, 2-hour backup Lithium Nanophosphate (LiFePO4) battery. They are fully compliant to the AS2293 emergency lighting standard.

FEATURES

- 3 year lithium LiFePO4 battery
- Maintained mode
- 16hr charge time
- 4.5W emergency power
- 2hr emergency power
- 6.4V 1500mAh
- 3 year warranty
- CO: E10, C90: D10



EMERGENCY SOLUTIONS
LIGHTING



FIREBIRD

The Firebird Emergency Exit Sign is designed for indoor use and features a premium, 2-hour backup Lithium Nanophosphate (LiFePO4) battery. They are fully compliant to the AS2293 emergency lighting standard.

FEATURES

- 3 year lithium LiFePO4 battery
- Maintained mode
- 16hr charge time
- 4.5W emergency power
- 2hr emergency power
- 6.4V 1500mAh
- 3 year warranty
- CO:E20 C90:D10





SMOKE ALARMS

240V MAINS POWER

BATTERY POWERED

PHOTOELECTRIC SMOKE ALARM



240V WIRED INTERCONNECTION (1YR 9V REPLACEABLE BATTERY)

The Emerald Planet (EP-HW-240-R1) Photoelectric Smoke Alarm is powered by 240V mains power and supported by a 1 year 9V battery back-up.

The alarm is fitted with a test/hush/silence button to facilitate testing of the alarm. The silence function allows the alarm/system to be silenced in the case of a false alarm. Silencing one alarm will silence all connected alarms.

This alarm can be stand-alone or can be connected (hardwired) with up to 12 alarms on one network. This allows all smoke alarms on the network to activate simultaneously.

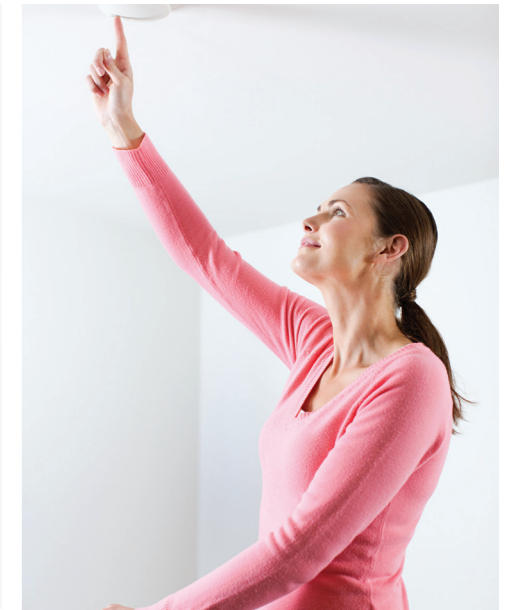
Designed to meet the rigorous new Australian smoke alarm standards (AS3786:2014).

CHARACTERISTICS

MODEL NUMBER	EP-HW-240-R1	POWER	240V, with 1yr 9V battery back-up
NORMAL OPERATING & STORAGE TEMPERATURE	0°C to 40°C	SENSOR	Photoelectric optical chamber
DIMENSIONS	125mm dia. 40mm deep	ALARM VOLUME	>85dB(A) at 3m
WEIGHT	190g	INTERCONNECT	Hardwire interconnection. Up to 12 units per circuit
WARRANTY	5 Years	NORMAL OPERATING & STORAGE HUMIDITY	15% to 95% relative humidity (non-condensing)
		INCLUDES	Screws, mounting plate and interconnection wires
		COMPATIBILITY	RF capability in enabled via the RF base (additional accessory), enabling connection with up to 40 alarms on one wireless network.
		ACCESSORIES	240V Base 240V RF base



PHOTOELECTRIC SMOKE ALARM



240V WIRED INTERCONNECTION (10YR LITHIUM REPLACEABLE BATTERY)

The Emerald Planet (EP-HW-240-Li10) Photoelectric Smoke Alarm is powered by 240V mains power and supported by a 10yr lithium battery back-up.

The alarm is fitted with a test/hush/silence button to facilitate testing of the alarm. The silence function allows the alarm/system to be silenced in the case of a false alarm. Silencing one alarm will silence all connected alarms.

This alarm can be stand-alone or can be connected (hardwired) with up to 12 alarms on one network. This allows all smoke alarms on the network to activate simultaneously.

Designed to meet the rigorous new Australian smoke alarm standards (AS3786:2014).

FEATURES

- 240V mains powered with 10yr Lithium battery back-up
- Slimline base plate included
- Hardwired Interconnectable with up to 12 alarms on one hard wired network
- RF interconnectable via RFBBase with up to 40 alarms on one wireless network (RFBBase sold separately).
- Single point hush control when interconnected
- High visibility LED indicator lights for test/hush/silence and fault warnings
- Loud alarm – 85dB(A) @ 3m
- Conforms to AS3786:2014
- CSIRO ActivFire listed
- 5 year warranty

CHARACTERISTICS

MODEL NUMBER	EP-HW-240-Li10	SENSOR	Photoelectric optical chamber	
NORMAL OPERATING & STORAGE TEMPERATURE	0°C to 40°C	ALARM VOLUME	>85dB(A) at 3m	
		INTERCONNECT	Hardwire interconnection. Up to 12 units per circuit	
DIMENSIONS	125mm dia. 40mm deep	LED STATUS	Active: Small red flash every 40 secs Alarm: Rapid red flash with alarm	
WEIGHT	190g	NORMAL OPERATING & STORAGE HUMIDITY	15% to 95% relative humidity (non-condensing)	
WARRANTY	5 Years	INCLUDES	Screws, mounting plate and interconnection wires	
		COMPATIBILITY	RF capability in enabled via the RF base (additional accessory), enabling connection with up to 40 alarms on one wireless network.	
		ACCESSORIES	240V Base	240V RF base



PHOTOELECTRIC SMOKE ALARM RF
ACCESSORIES



240V RF (RADIO FREQUENCY)
INTERCONNECTABLE BASE

The Emerald Planet RF base is an additional accessory to standard 240V smoke alarms. Installation is made easy with large terminals and a wide (140mm) base that allows for imperfect ceilings and coverage. After installing the RF base, the 240V smoke alarm is simply plugged directly into the base to function. It can then be easily removed for maintenance.

A simple pairing procedure creates an effective solution for interconnecting smoke alarms in different rooms and across multiple floors.



FEATURES

- 240V mains
- Connections:
 - L, N & E 240V terminals,
 - Wired interconnection terminal (if required)
- Base compatible with:
 - 240V 1 yr (EP-HW-240-R1)
 - 240V 10yr (EP-HW-240-Li10v2)
- RF network compatible with:
 - EP-RF-Li10
 - EP-RFBase
- Smoke alarm sold separately

PHOTOELECTRIC SMOKE ALARM
ACCESSORIES



240V
INTERCONNECTABLE BASE

The Emerald Planet EP Base is an additional accessory to standard 240V smoke alarms. Installation is made easy with large terminals and a wide (140mm) base that allows for imperfect ceilings and coverage. After installing the base, the 240V smoke alarms is simply plugged directly into the base to function. It can then be easily removed for maintenance.

The EP Base connects hardwired with up to 12 x 240V smoke alarms on one network.



FEATURES

- 240V mains
- Connections
 - L, N & E 240V terminals
 - Wired interconnection terminal (if required)
- Base Compatible with:
 - 240V 1 yr (EP-HW-240-R1)
 - 240V 10yr (EP-HW-240-Li10v2)
- Smoke alarm sold separately

CHARACTERISTICS

MODEL NUMBER	EP-RFBase	POWER	240V mains powered, with 10yr Lithium battery back-up
DIMENSIONS	140mm dia. 30mm deep	INTERCONNECT	The RF Base connects with - <ul style="list-style-type: none">RF - Up to 40 x 240V smoke alarms linked wirelesslyHardwired - Up to 12 x 240V smoke alarm on one network
WEIGHT	100g		
WARRANTY	5 Years		

CHARACTERISTICS

MODEL NUMBER	EP-Base	INTERCONNECT	Hardwire interconnection. Up to 12 units per circuit
DIMENSIONS	140mm dia. 30mm deep		
WEIGHT	100g		
WARRANTY	5 Years		



PHOTOELECTRIC SMOKE ALARM RF



RF INTERCONNECTION
(1YR REPLACEABLE BATTERY)

The Emerald Planet (EP-RF-R1) Photoelectric Smoke Alarm is powered by 2 x 1.5V AA replaceable batteries.

The alarm is fitted with a test/hush/silence button to facilitate testing of the alarm. The silence function allows the alarm/system to be silenced in the case of a false alarm. Silencing one alarm will silence all connected alarms.

This alarm can be stand-alone or can be connected (wireless RF) with up to 30 alarms. This allows all smoke alarms connected to activate simultaneously.

Designed to meet the rigorous new Australian smoke alarm standards (AS3786:2014).

FEATURES

- 1 year replaceable 2 x 1.5V AA batteries
- RF interconnectable with up to 30 alarms on one wireless network
- Single point hush control when interconnected
- High visibility LED indicator lights for test/hush/silence and fault warnings
- Loud alarm - 85dB(A) @ 3m
- Conforms to AS3786:2014
- CSIRO ActivFire listed
- 5 year warranty

CHARACTERISTICS

MODEL NUMBER	EP-RF-R1	POWER	1yr, 2 x 1.5V replaceable AA batteries
NORMAL OPERATING & STORAGE TEMPERATURE	0°C to 40°C	SENSOR	Photoelectric optical chamber
DIMENSIONS	118mm dia. 38mm deep	ALARM VOLUME	>85dB(A) at 3m
WEIGHT	190g	INTERCONNECT	Wireless RF interconnection. Up to 30 units per network
WARRANTY	5 Years	NORMAL OPERATING & STORAGE HUMIDITY	15% to 95% relative humidity (non-condensing)
		INCLUDES	Screws and mounting plate
		COMPATIBILITY	RF smoke alarm is only compatible with additional units of the same model (EP-RF-R1).



PHOTOELECTRIC SMOKE ALARM RF



RF INTERCONNECTION
(10YR LITHIUM BATTERY)

The Emerald Planet (EP-RF-Li10) Photoelectric Smoke Alarm is powered by a non-replaceable 10yr rated Lithium battery.

The alarm is fitted with a test/hush/silence button to facilitate testing of the alarm. The silence function allows the alarm system to be silenced in the case of a false alarm. Silencing one alarm will silence all connected alarms.

This alarm can be used as a stand-alone alarm or can be connected (wireless RF) with up to 40 alarms. This allows all smoke alarms connected to activate simultaneously.

Designed to meet the rigorous new Australian smoke alarm standards (AS3786:2014).

FEATURES

- 10 year 3V Lithium Ion battery
- RF interconnectable with up to 40 alarms on one wireless network
- Single point hush control when interconnected
- High visibility LED indicator lights for test/hush/silence and fault warnings
- Loud alarm - 85dB(A) @ 3m
- Conforms to AS3786:2014
- CSIRO ActivFire listed
- 5 year warranty

CHARACTERISTICS

MODEL NUMBER	EP-RF-Li10	POWER	DC 3V 10yr rated Lithium ion battery (non-removable)
NORMAL OPERATING & STORAGE TEMPERATURE	0°C to 40°C	SENSOR	Photoelectric optical chamber
DIMENSIONS	112mm dia. 38mm deep	ALARM VOLUME	>85dB(A) at 3m
WEIGHT	190g	INTERCONNECT	Wireless RF interconnection. Up to 40 units per network
WARRANTY	5 Years	NORMAL OPERATING & STORAGE HUMIDITY	15% to 95% relative humidity (non-condensing)
		INCLUDES	Screws and mounting plate
		COMPATIBILITY	RF smoke alarm is compatible with - • 240V smoke alarms with RF base • Self-compatible (i.e. additional units of the same model)



PHOTOELECTRIC SMOKE ALARMS



BATTERY POWERED
(1YR 9V REPLACEABLE BATTERY)

The Emerald Planet (EP-SA-R1) Photoelectric Smoke Alarm is powered by a 1yr 9V replaceable battery.

This is a stand-alone alarm, fitted with a test button to facilitate testing of the alarm.

Designed to meet the rigorous new Australian smoke alarm standards (AS3786:2014).

FEATURES

- 1 year replaceable 9V battery
- High visibility LED indicator lights for test and fault warnings
- Loud alarm - 85dB(A) @ 3m
- Conforms to AS3786:2014
- CSIRO ActivFire listed
- 5 year warranty

CHARACTERISTICS

MODEL NUMBER	EP-SA-R1	POWER	1yr, 9V replaceable battery
NORMAL OPERATING & STORAGE TEMPERATURE	0°C to 40°C	SENSOR	Photoelectric optical chamber
DIMENSIONS	130mm dia. 30mm deep	ALARM VOLUME	>85dB(A) at 3m
WEIGHT	160g	INTERCONNECT	None, stand-alone unit
SENSITIVITY	0.09-0.15d B/m	NORMAL OPERATING & STORAGE HUMIDITY	15% to 95% relative humidity (non-condensing)
WARRANTY	5 Years	INCLUDES	Screws and mounting plate



PHOTOELECTRIC SMOKE ALARMS



BATTERY POWERED
(10YR LITHIUM BATTERY)

The Emerald Planet (EP-SA-Li10) Photoelectric Smoke Alarm is powered by a 10yr 3V lithium battery.

This alarm is a stand-alone alarm, fitted with a test/hush/silence button to facilitate testing of the alarm.

The silence function allows the alarm/system to be silenced in the case of a false alarm.

Designed to meet the rigorous new Australian smoke alarm standards (AS3786:2014).

FEATURES

- 10 year non-replaceable 9V Lithium battery
- High visibility LED indicator lights for test/hush/silence and fault warnings
- Loud alarm - 85dB(A) @ 3m
- Conforms to AS3786:2014
- CSIRO ActivFire listed
- 5 year warranty

CHARACTERISTICS

MODEL NUMBER	EP-SA-Li10	POWER	10yr 3V non-replaceable lithium battery
NORMAL OPERATING & STORAGE TEMPERATURE	0°C to 40°C	SENSOR	Photoelectric optical chamber
DIMENSIONS	100mm dia. 30mm deep	ALARM VOLUME	>85dB(A) at 3m
WEIGHT	160g	INTERCONNECT	None, stand-alone unit
WARRANTY	5 Years	NORMAL OPERATING & STORAGE HUMIDITY	15% to 95% relative humidity (non-condensing)
		INCLUDES	Screws and mounting plate



COMMONLY USED LIGHTING TERMS

LUMENS (ILLUMINANCE)

The amount of light emitted by the light source.

LUX

Lux is the unit of illuminance measured on a surface.

LCP (LAMP CIRCUIT POWER, WATTS)

The amount of electrical power consumed by the light source.

EFFICACY (LUMENS PER WATT)

How efficiently the light source turns electrical power into light. The higher this number, the better.

CRI (COLOUR RENDERING INDEX)

Higher the better, >80 accepted as superior for general lighting purposes.

COB (CHIP ON BOARD)

Type of LED chip technology identified by a single, large chip in the middle of a luminaire.

SMD (SURFACE MOUNTED DIODE)

Type of LED chip technology identified by close arrangement of smaller chips in a luminaire.

CCT (COLOUR RENDERING TEMPERATURE, KELVINS)

Perceived colour of the light being produced. White light spectrum generally starts at “Warm White” 2700K (yellow look) up to “Daylight” 6500K (blue look).

BEAM ANGLE

A beam angle is a measurement of how the light is distributed.

POWER FACTOR

The power factor is the ratio of real power that is used and the apparent power that is supplied to the circuit.

DIMMER COMPATIBILITY

Suitability of new LED lights to operate with legacy dimmers designed for inefficient “halogen” lamps. Each LED model will have differing compatibilities; this will need to be checked before installation.

SDCM (STANDARD DEVIATION COLOUR MATCHING)

A guide as to the closeness of the actual CCT to the target colour. Measured in McAdam ellipses, a 7 step SDCM is regarded as acceptable for general lighting.

UGR (UNIFIED GLARE RATING)

The measurement of the amount of light from a lighting installation incident on an eye. Dependent on where lights are positioned rather than a property of a light itself. A key consideration in lighting designs.

L70 (LED LIFETIME)

A mathematical projection based on LED chip data to estimate the lumen depreciation of an LED light source. It is stated as the amount of time in hours it will take for the lumen output of the light to fall to 70% of its initial output.

IP RATING GUIDE

First Digit:

Level	Protection against solid objects of size
0	—
1	>50mm (e.g. back of hand)
2	>12.5mm (e.g. a finger)
3	>2.5mm (e.g. tools, thick wires etc.)
4	>1mm (e.g. most wires, slender screws, large ants etc.)
5	Dust protected (blocks out most dust)
6	Dust tight (blocks out all dust)

Second Digit:

Level	Protection against liquids
0	None
1	Dripping water
2	Dripping water when tilted at 15°
3	Spraying water
4	Splashing of water
5	Water jets
6	Powerful water jets
6K	Powerful water jets (with increased pressure)
7	Immersion (up to 1m depth)
8	Immersion (1m or more depth)
9K	Powerful high temperature water jets

Example:



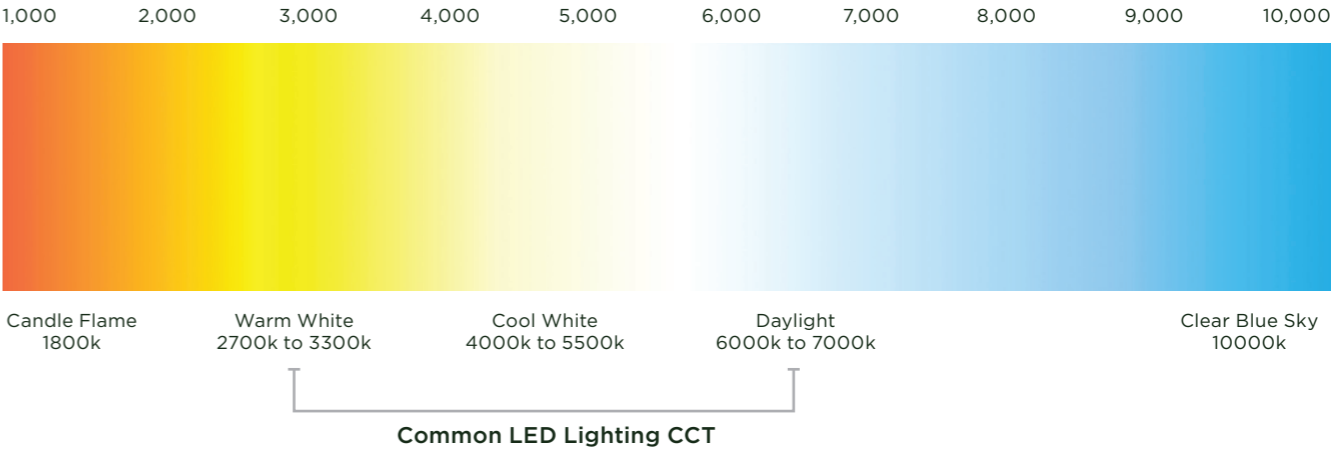
IP 6.5

Dust Tight

Resistant to jets of water

CCT SPECTRUM

Colour Temperature in Kelvin (K)





EMERALD
PLANET
SMART SOLUTIONS

LOCATIONS

EMERALD PLANET PTY LTD



SYDNEY OFFICE

Unit 2 / 29 Mitchell Road,
Brookvale NSW 2100

P 02 9466 6000



MELBOURNE OFFICE

38 Punt Road,
Windsor VIC 3181

P 1300 511 148



WAREHOUSING

- Sydney
- Melbourne
- Adelaide
- Brisbane
- Gold Coast
- Canberra

emeraldplanet.com.au